

# Jeju Balanced Skin Energy Active

## PLANTIA-GREEN TEA(G)

The power of Jeju green tea to energize skin from within, while keeping it calm, balanced, and resilient.

### KEY FUNCTION



**85.8%**  
ROS reduction  
Reduces cellular stress load



**51.5%**  
increased angiogenesis  
Improves nutrient & oxygen delivery



**3X**  
more mitochondrial activity  
Supports skin vitality at a cellular level

### THE STORY OF GREEN ENERGY



For centuries, green tea has been valued across Eastern cultures as a revitalizing beverage—known to reduce swelling, awaken energy, and restore internal balance.



This effect is driven by its high levels of catechins, powerful bioactive compounds that help improve circulation, neutralize oxidative stress, and regulate inflammation.

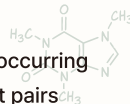


Translating these benefits into skincare, green tea helps visibly de-puff, soothe stressed skin, and strengthen the skin's defense system, delivering a refreshed, balanced, and healthy-looking complexion.

### KEY INGREDIENT SCIENCE

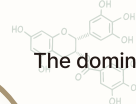
#### Caffeine

A naturally occurring alkaloid that pairs synergistically with EGCG. Together they improve microvascular flow, boost cellular metabolism, and amplify antioxidant activity beyond either compound alone.



#### EGCG

The dominant green tea polyphenol (65% of catechins). It strengthens the skin barrier and boosts collagen synthesis for superior resilience and anti-aging.



### Mechanism for Edema Relief & Skin Vitality

Boosting cellular energy and vascular barrier integrity for revitalized skin.



Ingredient Treatment

#### 1. Enhances Angiogenesis

VEGF/VEGFR2 ↑

PI3K/Akt ↑  
eNOS ↑  
NO ↑

Tube Formation ↑

VEGF/VEGFR2, PI3K/Akt, and eNOS signaling are enhanced.

#### 2. Boosts Mitochondrial Activity

PI3K/Akt ↑

Higher mitochondrial membrane potential ( $\Delta\Psi_m$ )  
ROS ↓

JC-1 Staining (Red/Green Ratio) ↑  
 $\Delta\Psi_m$  maintenance and ATP generation are enhanced.

#### 3. Reduces ICAM-1 Expression by Inhibiting Inflammation

ICAM-1 expression ↓  
Reduces inflammatory responses and leukocyte adhesion.

ICAM-1 expression ↓  
Reduces inflammatory responses and leukocyte adhesion.

#### 4. Strengthens Vascular Barrier Function

VE-cadherin expression ↑

VE-cadherin Western Blot ↑  
Improves vascular barrier integrity and reduces permeability.

VE-cadherin Western Blot ↑  
Improves vascular barrier integrity and reduces permeability.

### APPLICATIONS

Anti-puffing & circulation care    Hydration & vitality booster  
Soothing & sensitive skin care    Anti-aging & firming  
Daily stress defense

### KEY COMPONENTS

JEJU GREEN TEA EXTRACT    CAFFEINE  
CATECHINS & EGCG    NATURAL BIOACTIVES  
POLYPHENOLS

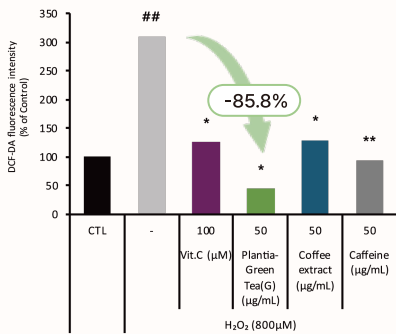
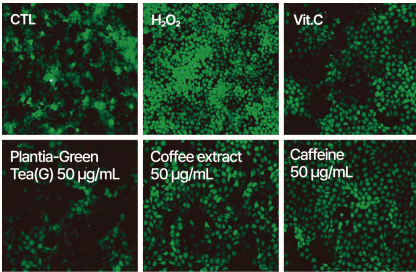


# SCIENCE-BACKED DATA

## To Support Proven Efficacy

### 1 ANTIOXIDANT DEFENSE

Protective Effect against Oxidative Stress

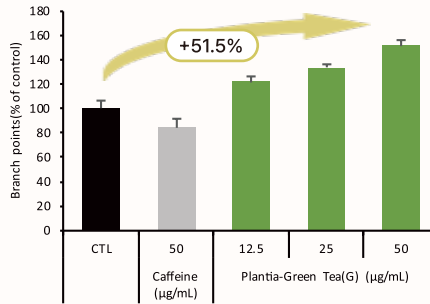
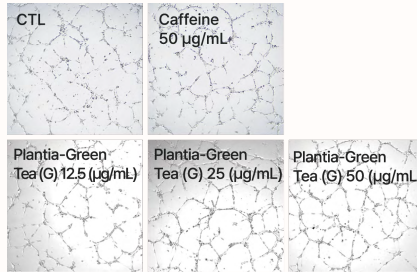


ROS Scavenging activity ↑

• Potent antioxidant activity with 85.8% ROS reduction.

### 2 Enhanced Angiogenesis

Improves nutrient & oxygen delivery

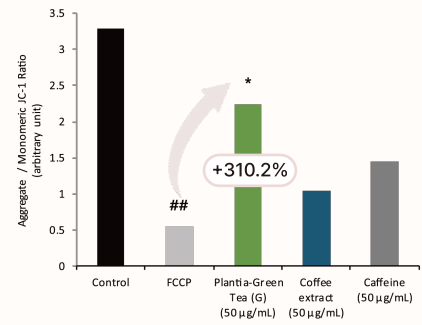
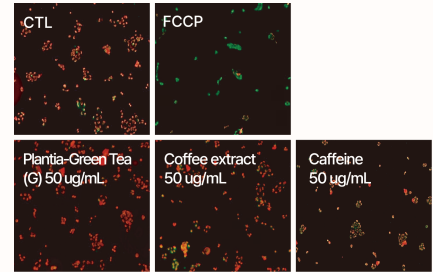


Num of Branch Point ↑

• Supports angiogenesis with 51.5% increased branch formation.

### 3 Boosts Mitochondrial Activity

Enhancement of Mitochondrial Membrane Potential

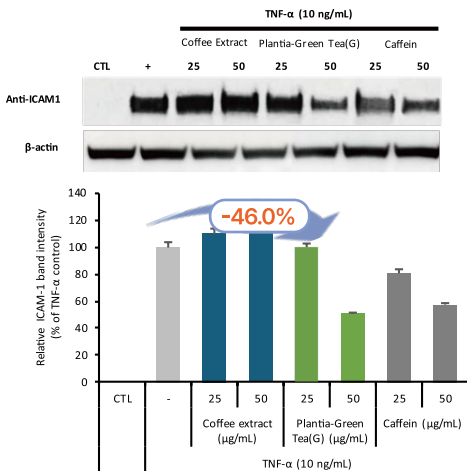


Red/Green Fluorescence Ratio ↑

• Boosts mitochondrial potential with a 310.2% increase in JC-1 ratio.

### 4 Anti-inflammatory and Vascular barrier support

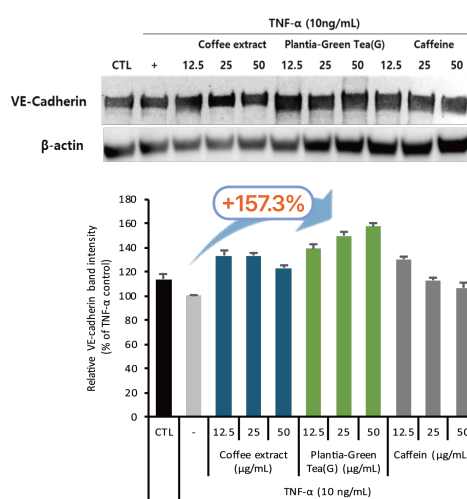
#### Inhibition of Inflammatory Marker (ICAM-1)



ICAM expression ↓

• Strengthens the endothelial barrier by lowering ICAM-1 and increasing VE-cadherin.

#### Reinforcement of Micro-vessel Stability (VE-Cadherin)



VE-Cadherin expression ↑

## DUAL ACTION FOR BALANCED SKIN ENERGY



#### Immediate Physical Support

Caffeine reduces puffiness immediately



#### Long-term Biological Support

Protects Skin from Stress and improves skin resilience



#### CLEAN & RESPONSIBLE



#### GLOBAL AVAILABILITY



#### CERTIFICATIONS



#### CONTACT US

+1-201-359-0425  
sales@duraeglobal.com  
Englewood Cliffs, NJ

